

Load Compatibility Chart

Incandescent	✓
240V Halogen	✓
Low Voltage Halogen with Electronic Transformer (see note 1)	✗
Low Voltage Halogen with Wirewound (Iron Core) Transformer	✓
GU10 240V Halogen Downlights	✓
Linear Fluorescent	✗
Compact Fluorescent (Energy saver)	(see note 3)
Fan Motor	✗

NOTE:

- Some Electronic Transformers state that they are compatible with Leading Edge Dimmers. However, significant de-rating of the dimmer is usually required. Therefore, HPM recommends the use of Trailing Edge Dimmers (HPM Cat 250T or 400T) for these applications.
- Wirewound (Iron Core) and Electronic Transformers should not be mixed on the same dimmer circuit.
- Compact Fluorescent Lamps (CFLs), also known as Energy Saving Lamps, can only be dimmed if they are specifically marked as "dimmable". Dimmable CFLs may have different characteristics from brand to brand, and so each brand may require a specific type of dimmer to operate correctly. Using the incorrect dimmer may cause the CFL to flicker. Please read the documentation that comes with each CFL carefully to ensure that the CFL and dimmer are compatible. For more information, please contact HPM Legrand. In some cases, the dimmable CFL may turn off or flicker when dimmed to a very low brightness. This can be overcome by ensuring that the dimmer brightness is not set too low. See "Setting minimum brightness" for instructions on how to achieve this.

Specifications (at 25°C)

Supply voltage: 230-240V a.c. 50Hz

Minimum load: 10W

Maximum load: See table below



Cat No.	Load type	Dimmers per plate		
		1	2	3
250L	Incandescent or 240V halogen	250W	225W	200W
	Wirewound Transformer	200W	180W	160W
400L	Incandescent or 240V halogen	400W	350W	300W
	Wirewound Transformer	320W	280W	240W

NOTE: Wirewound transformer values are 20% lower due to losses in the transformer.

Features

■ Soft start

Lamp turns on gradually to increase lamp life.

■ Over-temperature protection

If the dimmer gets too hot (due to overloading or insufficient de-rating), the lamp brightness is automatically reduced. After the dimmer cools down, normal operation is automatically resumed. Be sure to correct the cause of the high temperature!

■ Short-circuit protection

If the dimmer receives a short circuit or surge (due to faulty wiring or lamp failure), it automatically turns itself off before damage can occur. Simply turn the switch off and on again to resume operation. Be sure to correct the cause of the short circuit!

■ Flicker-free design

Immune to flickering due to ripple signal injection on mains supply.

■ Wall plate options

Compatible with HPM's Standard, Excel, Linea and Architectural range of switch plates and accessories.

Wiring instructions

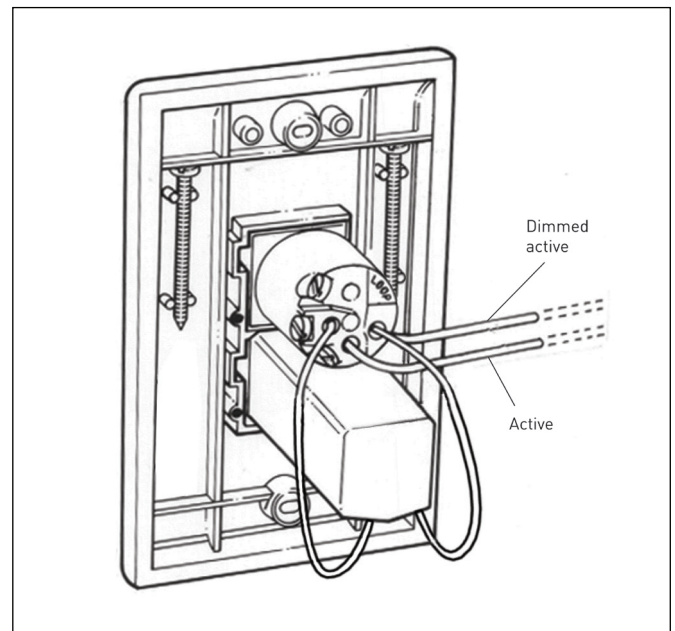


Fig 1. View from back of plate

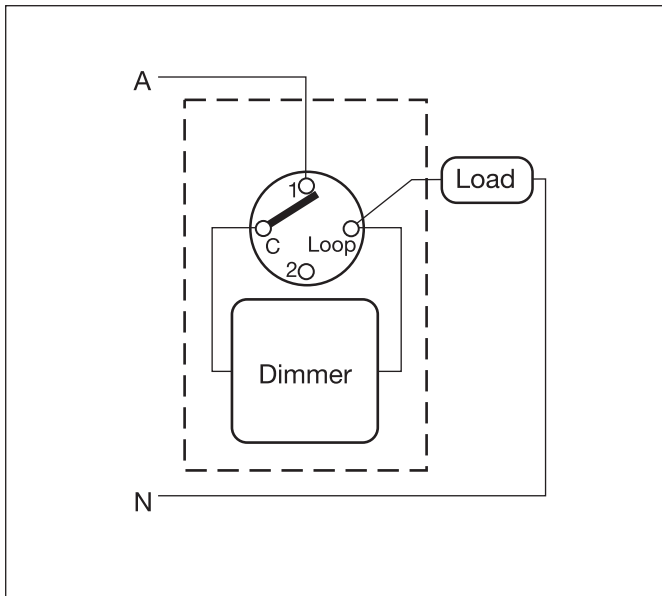


Fig 2. One-way wiring diagram

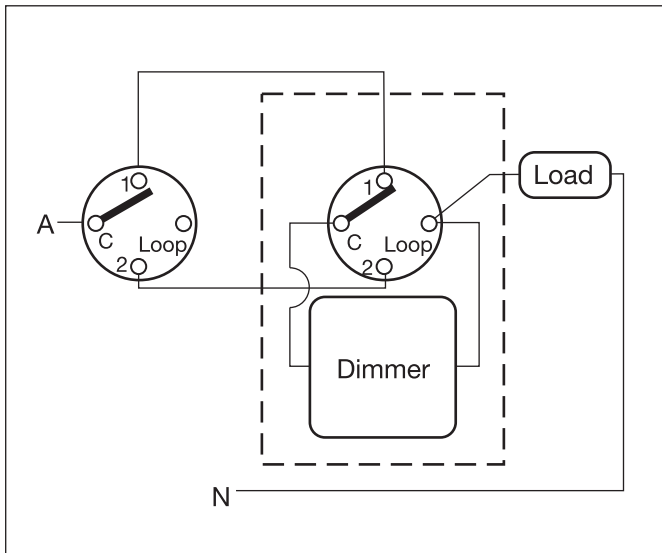


Fig 3. Two-way wiring diagram

Important note

When used in ambient temperatures greater than 25°C, the dimmer must be de-rated according to Fig 4.

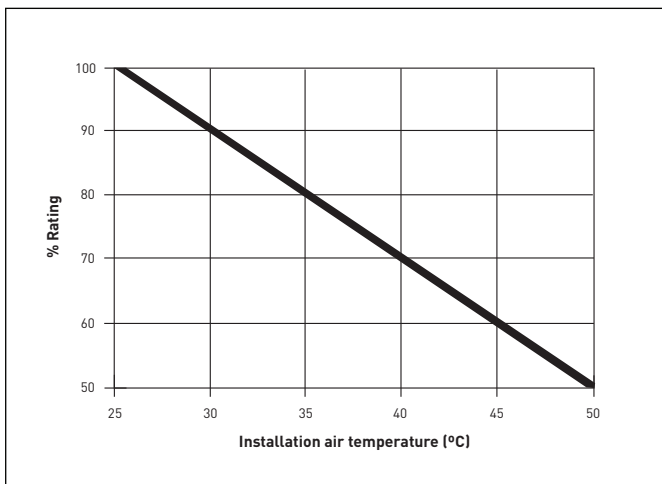


Fig 4. De-rating for high ambient temperatures

Setting minimum brightness

- The minimum brightness can be set before the knob is put into place.
- When the unit is wired and mounted as required, switch on the power.
- Turn the potentiometer carefully by hand until the desired minimum brightness is obtained.
- Insert the knob so that the "tongue" on the knob lines up with the slot on the dimmer (see Fig 5).
- Once inserted, the knob cannot be turned any further anticlockwise.

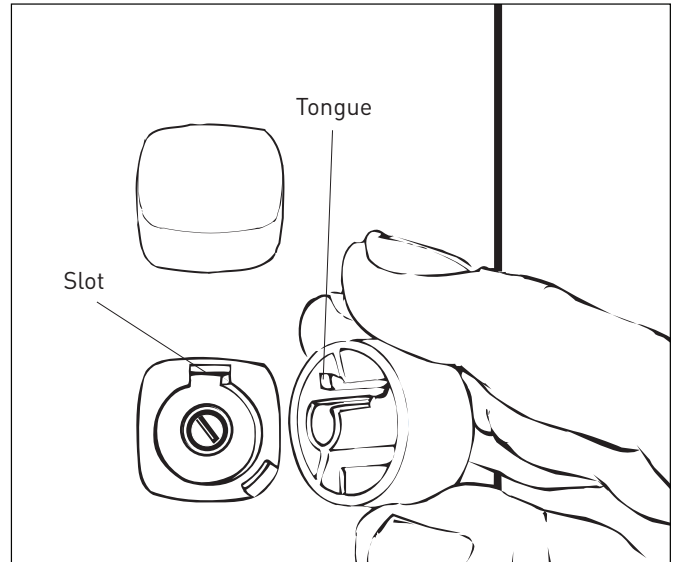


Fig 5. Setting minimum brightness

SWITCHES, POWERPOINTS AND OTHER FIXED WIRED PRODUCTS MUST BE INSTALLED BY AN ELECTRICAL CONTRACTOR OR SIMILARLY QUALIFIED PERSON

Warranty

HPM Cat 250L & 400L Series are warranted as here and after appears, against faulty material and/or workmanship for a period of one year from the day of purchase. The obligation of the manufacturer under this warranty is limited to servicing and replacing defective parts when the unit is returned to the authorised place of purchase. To obtain warranty repair, the purchase receipt should be returned with the product. This warranty becomes void on any unit which has been tampered with or damaged by accident, short circuited, loaded beyond rating or damaged otherwise by improper operation. The warranty is also conditional on the unit being installed by a licensed electrical contractor. All other warranties, whether expressed or implied, and whether arising by operation of law or otherwise are hereby excluded.

HPM Legrand